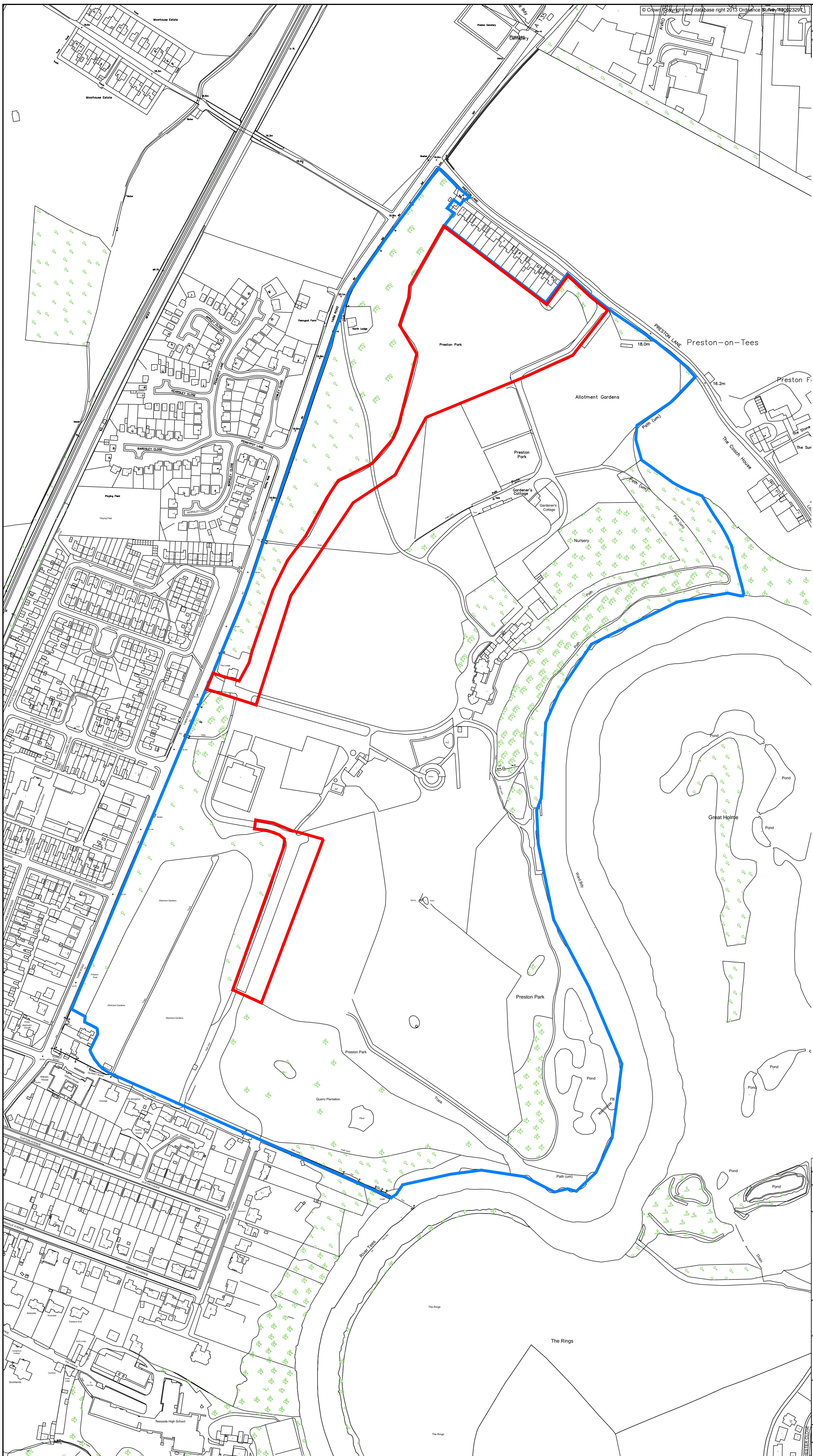


NOTES

- Proposed development site
- Park boundary



Rev	Description	Drn	Chk	Date
A	Red line boundary extended up to Yarm Road	SW	PS	22-12-14

Drawing Status: PRELIMINARY APPROVAL
 INFORMATION TENDER CONSTRUCTION



Development & Neighbourhood Services
 Head of Technical Services Richard McGuckin B.Eng., C.Eng., F.I.C.E.
 P.O.Box 229, Kingsway House, West Precinct, Billingham, TS23 2YL
 Telephone (01642) 393939. E-mail: technicalservices@stockton.gov.uk

Project
**PRESTON PARK MASTERPLAN
 CAR PARK IMPROVEMENTS**

Content
**LOCATION PLAN AND
 RED LINE BOUNDARY**

Date	OCT 2014	Dwg No.	TS10287-00-01
Drawn	SW	Checked	PE
Scale	1:2000		Rev
			A